

QUARTERFINAL ROUND

Marion County

vs.

Warren Central

March 19, 1993

VISITORS (Last Name, First)

NO.	WARREN CENTRAL	Tot FG		3-POINT		FT	FTA	Rebounds			PF	TP	A	TO	BLK	S	TIME
		FG	FGA	FG	FGA			OFF	DEF	TOT							
20	POYNTER, WAYNE	2	11	0	2	0	1	4	0	4	1	4	0	3	1	24:09	
52	HEIDBRINK, CHRIS	0	6	0	0	2	2	4	7	11	4	2	0	2	0	20:45	
53	BUNDY, JERRY	5	13	0	0	1	1	2	2	4	3	11	0	3	0	26:55	
22	ROGERS, BROCK	3	14	0	2	0	0	5	1	6	5	6	2	3	0	23:30	
32	WHITLOCK, RONNIE	0	5	0	4	0	0	0	1	1	0	0	1	1	0	22:16	
12	RILEY, JODY	1	4	0	3	1	2	0	0	0	0	3	1	4	0	8:55	
50	KIRBY, ANTHONY	2	5	0	0	2	6	5	2	7	2	6	0	0	0	16:46	
04	BOYD, TIM	1	3	1	3	0	0	0	2	2	0	3	0	0	0	5:59	
55	RIDER, ANDREW	0	1	0	0	0	0	0	0	0	0	0	0	0	0	3:25	
03	BARBER, TRAVIS	2	6	1	1	2	3	1	0	1	1	7	0	0	1	3:20	
34	SARVER, TORRENCE	0	0	0	0	0	0	2	1	1	1	0	0	2	0	2:00	
41	GABHARI, CHRIS	1	1	0	0	1	2	2	0	2	1	3	0	0	0	2:00	
TEAM REBOUNDS (INCLUDED IN TOTALS)								1	1	1							
TOTALS		17	69	2	15	9	17	24	16	40	18	45	4	19	1	160	

TOTAL FG	1st HALF	5/11	45.5%	2nd HALF	12/58	20.7%	GAME	17/69	24.6%	DEADBALL	
3-POINT FG	1st HALF	0/2	0.0%	2nd HALF	2/13	15.4%	GAME	2/15	13.3%	REBOUNDS	6
FREE THROWS	1st HALF	3/4	75.0%	2nd HALF	6/13	46.2%	GAME	9/17	52.9%		

HOME (Last Name, First)

NO.	MARION COUNTY	Tot FG		3-POINT		FT	FTA	Rebounds			PF	TP	A	TO	BLK	S	TIME
		FG	FGA	FG	FGA			OFF	DEF	TOT							
04	CRUME, ALEX	1	3	0	0	0	1	1	1	2	1	2	0	1	0	11:46	
21	SCOTT, ELTON	6	9	0	1	2	2	3	5	8	0	14	5	2	1	20:17	
51	O'DANIEL, STUART	2	3	0	0	0	1	2	2	4	2	4	0	1	0	12:42	
15	DOUGLAS, MICHAEL	8	13	5	10	0	0	1	1	2	2	21	0	0	0	20:17	
25	EPPS, ANTHONY	4	12	3	8	3	3	1	1	2	0	14	10	1	1	20:18	
10	BIGGERS, VINCENT	1	2	0	0	0	1	2	5	7	3	2	1	6	0	15:29	
31	ENGLISH, DERRICK	4	7	0	1	1	1	2	4	4	2	9	0	0	1	13:24	
32	FERRIELL, STEVEN	0	2	0	1	0	0	0	2	2	1	0	2	0	0	10:12	
24	HATTINGLY, CRAIG	0	1	0	0	2	3	0	0	0	1	2	0	0	0	10:11	
30	BELLE, JUTE	2	3	0	0	0	1	0	3	3	1	4	0	0	0	9:37	
55	BELL, QUINCY	0	0	0	0	0	0	0	1	1	1	0	0	1	0	3:26	
11	OWEN, TOMMY	2	4	0	1	1	2	1	0	1	0	5	0	2	0	4:57	
52	WOOD, RUSTY	0	0	0	0	0	0	0	2	2	2	0	0	1	0	2:28	
12	OWENS, ANTHONY	1	1	0	0	0	0	0	1	1	1	2	0	2	0	2:28	
40	COX, BRAD	0	0	0	0	0	0	0	0	0	0	0	0	1	0	2:28	
TEAM REBOUNDS (INCLUDED IN TOTALS)								3	3	3							
TOTALS		31	60	8	22	9	16	15	31	46	17	79	18	18	4	160	

TOTAL FG	1st HALF	9/18	50.0%	2nd HALF	22/42	52.4%	GAME	31/60	51.7%	DEADBALL	
3-POINT FG	1st HALF	4/11	36.4%	2nd HALF	4/11	36.4%	GAME	8/22	36.4%	Rebounds	4
FREE THROWS	1st HALF	3/4	75.0%	2nd HALF	6/12	50.0%	GAME	9/16	56.3%		

OFFICIALS: ERNIE LIGGETT, FRANKIE FRANCIS, ALT. - C. KIRK

Technicals: None

SCORE BY PERIODS				
WARREN CENTRAL	13	6	8	18 = 45
MARION COUNTY	25	26	15	13 = 79

Attendance: 15,950

COMMENTS:	POINTS OFF	TURNOVERS	SECOND CHANCE POINTS
WARREN CENTRAL	16	MARION COUNTY	22
			13
			MARION COUNTY
			12

Produced by the KHSAA Sweet Sixteen Stat Crew with FINAL III - a Product of LEXICON SPORTS™

WARREN CENTRAL "DRAGONS" vs MARION COUNTY "KNIGHTS"
1st Half Play by Play

Tip off at 7:30 p.m. on 03/19/93 at BOYS STATE TOURNEY GM 11
Produced by the KHSAA Sweet Sixteen Stat Crew with FINAL III - a Product of LEXICON S

Player	Team	MARION COUNTY		
CRUME, ALEX, SCOTT, ELTON, O'DANIEL, STUART, DOUGLAS, MICHAEL, EPPS, ANTHONY				
Ball to KNIGHTS				
1-1	100%	1-1	100%	4 ft Lane Turnaround by CRUME, ALEX
1-1	100%	2-2	100%	3 pt 23 ft Right Side Jump shot by DOUGLAS, MICHAEL
2		2		Assist by EPPS, ANTHONY
2-2	100%	2-2	100%	SCOTT, ELTON, 2 Free Throws made both
1-2	50.0%	3-5	60.0%	Dunk Off Fast Break by SCOTT, ELTON
3		3		Assist by EPPS, ANTHONY
1		1		Foul on CRUME, ALEX
2-3	66.6%	4-7	57.1%	3 pt 22 ft Left Side Jump shot by DOUGLAS, MICHAEL
2-4	50.0%	5-8	62.5%	Alley Oop Dunk by SCOTT, ELTON
4		4		Assist by EPPS, ANTHONY

PAGE : 1	
Time	Score
1 7:27	*2-0
1 6:54	*5-0
1 6:33	
1 6:33	*7-0
1 6:15	
1 5:50	*9-0
1 5:35	9-2*
1 5:03	
1 5:03	9-4*
1 4:55	*12-4
1 4:44	*14-4

WARREN CENTRAL		Player	Team
POYNTER, WAYNE, HEIDBRINK, CHRIS, BUNDY, JERRY, ROGERS, BROCK, WHITLOCK, RONNIE			
		1	1
Sub In: RILEY, JODY Out: WHITLOCK, RONNIE			
		1-1	100% 1-2 50.0%
		2-2	100% 2-2 100%

REB: 2 A: 4 BLK: 0 TO: 1 PF: 1
S: 2 FT: 2-2 100% FG: 5-8 62.5%

T I M E - 0 U T WARREN CENTRAL No. 1

REB: 2 A: 0 BLK: 1 TO: 5 PF: 1
S: 0 FT: 2-2 100% FG: 1-2 50.0%

1		2		Foul on O'DANIEL, STUART
2		3		Foul on O'DANIEL, STUART
Sub In: BIGGERS, VINCENT Out: CRUME, ALEX				
Sub In: ENGLISH, DERRICK Out: O'DANIEL, STUART				
3-5	60.0%	6-11	54.5%	3 pt 22 ft Left Side Jump shot by DOUGLAS, MICHAEL
1		5		Assist by SCOTT, ELTON
3-5	60.0%	7-12	58.3%	Dunk Off Fast Break by SCOTT, ELTON
1-2	50.0%	8-13	61.5%	3 pt 23 ft Left Side Jump shot by EPPS, ANTHONY
2		6		Assist by SCOTT, ELTON
4-6	66.6%	9-14	64.2%	Driving Layup by DOUGLAS, MICHAEL
1-1	100%	3-3	100%	ENGLISH, DERRICK, 1 Free Throw made
1-2	50.0%	3-4	75.0%	ENGLISH, DERRICK, 1 Free Throw missed
1		4		Foul on DOUGLAS, MICHAEL
1		5		Foul on BIGGERS, VINCENT

1 4:40	
1 3:56	14-6*
1 3:56	
1 3:56	
1 3:56	14-7*
1 3:40	*17-7
1 3:27	*19-7
1 3:20	
1 3:12	*22-7
1 2:36	*24-7
1 2:25	
1 2:25	
1 2:06	
1 2:06	*25-7
1 2:05	
1 1:43	25-9*
1 1:25	
1 0:35	25-11*
1 0:35	
1 0:35	
1 0:35	
1 0:13	25-13*

4 ft Lane Driving by BUNDY, JERRY			
1-2	50.0%	2-3	66.6%
BUNDY, JERRY, 1 Free Throw made			
1-1	100%	3-3	100%
Foul on ROGERS, BROCK			
1		2	
Foul on HEIDBRINK, CHRIS			
1		3	
Sub In: WHITLOCK, RONNIE Out: RILEY, JODY			
1		4	
Foul on BUNDY, JERRY			
1-1	100%	3-6	50.0%
1-3	33.3%	4-10	40.0%
Sub In: KIRBY, ANTHONY Out: HEIDBRINK, CHRIS			
0-1	00.0%	3-4	75.0%
1-1	100%	5-11	45.4%

Player	Team	MARION COUNTY	Time	Score	WARREN CENTRAL	Player	Team
BIGGERS,VINCENT,DOUGLAS,MICHAEL,SCOTT, ELTON,ENGLISH,DERRICK,EPPS, ANTHONY					POYNTER, WAYNE ,KIRBY, ANTHONY ,BUNDY, JERRY,ROGERS, BROCK,WHITLOCK,RONNIE Ball to DRAGONS		
1-2	50.0%	10-20 50.0%	2	7:16	*27-13		
Driving Layup by ENGLISH,DERRICK			2	7:04			
2-4	50.0%	11-21 52.3%	2	6:51	*30-13	2	5
3 pt 22 ft Left Side Jump shot by EPPS, ANTHONY					Foul on ROGERS, BROCK		
Assist by BIGGERS,VINCENT							
1	57.1%	12-22 54.5%	2	6:17	*32-13		
Alley Oop Layup by SCOTT, ELTON							
Assist by EPPS, ANTHONY							
5			2	6:00			
Foul on ENGLISH,DERRICK			2	6:00			
			2	5:31	32-15*	2-2	100%
7 ft Lane Turnaround by ENGLISH,DERRICK			2	5:19	*34-15		6-16 37.5%
Assist by EPPS, ANTHONY							
2-3	66.6%	13-23 56.5%	2	4:57	34-17*	2-4	50.0%
3 pt 22 ft Right Side Jump shot by DOUGLAS,MICHAEL			2	4:45	*37-17		7-18 38.0%
Assist by SCOTT, ELTON					Follow Layup by ROGERS, BROCK		
5-9	55.5%	14-24 58.3%	2	4:16	*39-17		
Follow Tip by SCOTT, ELTON			2	4:03			
Sub In: O'DANIEL,STUART Out: ENGLISH,DERRICK			2	4:03		3	6
			2	4:03			
			2	4:03			
			2	4:03			
			2	3:51		1	7
			2	3:50			
0-1	00.0%	3-5 60.0%	2	3:48		2	8
O'DANIEL,STUART, 1 & Bonus missed 1st					Foul on KIRBY, ANTHONY		
			2	3:48			
0-1	00.0%	3-6 50.0%	2	3:16	*41-17		
BIGGERS,VINCENT, 1 & Bonus missed 1st							
6-9	66.6%	16-29 55.1%	2	3:07			
Dunk Off Fast Break by SCOTT, ELTON					REB: 14 A: 0 BLK: 1 TO: 14 PF: 8		
Assist by EPPS, ANTHONY			2	3:07		S: 3 FT: 3-4 75.0% FG: 7-21 33.3%	
			2	3:07			
			2	2:54	*43-17		
Sub In: CRUME, ALEX Out: BIGGERS,VINCENT					WARREN CENTRAL No. 2		
6-10	60.0%	17-30 56.6%	2	2:23			
Layup Off Fast Break by DOUGLAS,MICHAEL					Sub In: ROGERS, BROCK Out: RILEY, JODY		
Assist by EPPS, ANTHONY			2	2:23			
			2	2:23			
			2	2:09		2	9
			2	2:09			
0-1	00.0%	3-7 42.8%	2	2:05			
CRUME, ALEX, 1 & Bonus missed 1st					Foul on HEIDBRINK,CHRIS		
3-9	33.3%	18-34 52.9%	2	2:05	*45-17	2	10
6 ft Lane Follow by EPPS, ANTHONY					Sub In: BUNDY, JERRY Out: KIRBY, ANTHONY		
Assist by SCOTT, ELTON							
4			2	1:42	46-19*	2-5	40.0%
EPPS, ANTHONY, 1 Free Throw made			2	1:36	*49-19		8-26 30.7%
1-1	100%	4-8 50.0%	2	1:09			
3 pt 22 ft Right Side Jump shot by DOUGLAS,MICHAEL					Sub In: KIRBY, ANTHONY Out: HEIDBRINK,CHRIS		
Assist by EPPS, ANTHONY			2	1:09			
			2	1:09			
			2	1:09			
			2	1:08			
			2	0:30	*51-19		
1-1	100%	20-37 54.0%			Sub In: FERRIELL,STEVEN Out: DOUGLAS,MICHAEL		
6 ft Lane Turnaround by BIGGERS,VINCENT					Sub In: BUNDY, JERRY Out: KIRBY, ANTHONY		
Assist by FERRIELL,STEVEN							
1					Foul on BUNDY, JERRY		

1st Half Play by Play (continued)

Player	Team	MARION COUNTY	Time	Score	WARREN CENTRAL	Player	Team
0-1	00.0%	20-38 52.6%	2	0:00			
3 pt 23 ft Left Side Jump shot							
by FERRIELL,STEVEN, missed							
0-1	Tot-1	0-1 Tot-24	2	0:00			
Rebound by BIGGERS,VINCENT							
1-2	50.0%	20-39 51.2%	2	0:00			
12 ft Left Side Follow by BIGGERS,VINCENT, missed							
0-1	Tot-1	0-2 Tot-25	2	0:00			
Rebound by O'DANIEL,STUART							

VISITORS (Last Name, First)

NO.	WARREN CENTRAL	Tot FG		3-POINT		FT	FTA	Rebounds			PF	TP	A	TO	BLK	S	TIME
		FG	FGA	FG	FGA			OFF	DEF	TOT							
20	POYNTER, WAYNE	1	5	0	2	0	1	0	0	0	1	2	0	3	1	0	14:03
52	HEIDBRINK, CHRIS	0	6	0	0	2	2	4	5	9	2	2	0	2	0	2	12:16
53	BUNDY, JERRY	2	5	0	0	1	1	0	2	2	2	5	0	2	0	0	14:20
22	ROGERS, BROCK	2	5	0	1	0	0	2	1	3	3	4	0	3	0	1	14:20
32	WHITLOCK, RONNIE	0	2	0	2	0	0	0	1	1	0	0	0	1	0	0	12:10
12	RILEY, JODY	1	3	0	2	0	0	0	0	0	0	2	0	4	0	0	5:30
50	KIRBY, ANTHONY	2	3	0	0	0	0	2	1	3	2	4	0	0	0	0	7:21
TEAM REBOUNDS (INCLUDED IN TOTALS)								1	1	1							
TOTALS		8	29	0	7	3	4	9	10	19	10	19	0	16	1	3	80
TOTAL FG 1st HALF 5/11 45.5%				2nd HALF 3/18 16.7%		GAME				8/29 27.6%		DEADBALL					
3-POINT FG 1st HALF 0/2 0.0%				2nd HALF 0/5 0.0%		GAME				0/7 0.0%		REBOUNDS				0	
FREE THROWS 1st HALF 3/4 75.0%				2nd HALF 0/0 0.0%		GAME				3/4 75.0%							

HOME (Last Name, First)

NO.	MARION COUNTY	Tot FG		3-POINT		FT	FTA	Rebounds			PF	TP	A	TO	BLK	S	TIME
		FG	FGA	FG	FGA			OFF	DEF	TOT							
04	CRUME, ALEX	1	3	0	0	0	1	0	0	0	1	2	0	0	0	0	7:11
21	SCOTT, ELTON	6	9	0	1	2	2	3	1	4	0	14	4	1	2	1	14:51
51	O'DANIEL, STUART	0	1	0	0	0	1	2	2	4	2	0	0	1	0	0	8:07
15	DOUGLAS, MICHAEL	7	11	5	9	0	0	1	0	1	1	19	0	0	0	3	14:51
25	EPPS, ANTHONY	3	9	2	7	1	1	1	1	2	0	9	9	0	1	2	14:52
10	BIGGERS, VINCENT	1	2	0	0	0	1	2	5	7	1	2	1	3	0	0	9:58
31	ENGLISH, DERRICK	2	3	0	0	1	2	3	2	5	1	5	0	0	1	0	7:53
32	FERRIELL, STEVEN	0	1	0	1	0	0	0	1	1	0	0	1	0	0	0	1:09
24	HATTINGLY, CRAIG	0	0	0	0	0	0	0	0	0	0	0	0	0	0	0	1:08
TEAM REBOUNDS (INCLUDED IN TOTALS)								1	1	1							
TOTALS		20	39	7	18	4	8	12	13	25	6	51	15	5	4	6	80
TOTAL FG 1st HALF 9/18 50.0%				2nd HALF 11/21 52.4%		GAME				20/39 51.3%		DEADBALL					
3-POINT FG 1st HALF 4/11 36.4%				2nd HALF 3/7 42.9%		GAME				7/18 38.9%		Rebounds				1	
FREE THROWS 1st HALF 3/4 75.0%				2nd HALF 1/4 25.0%		GAME				4/8 50.0%							

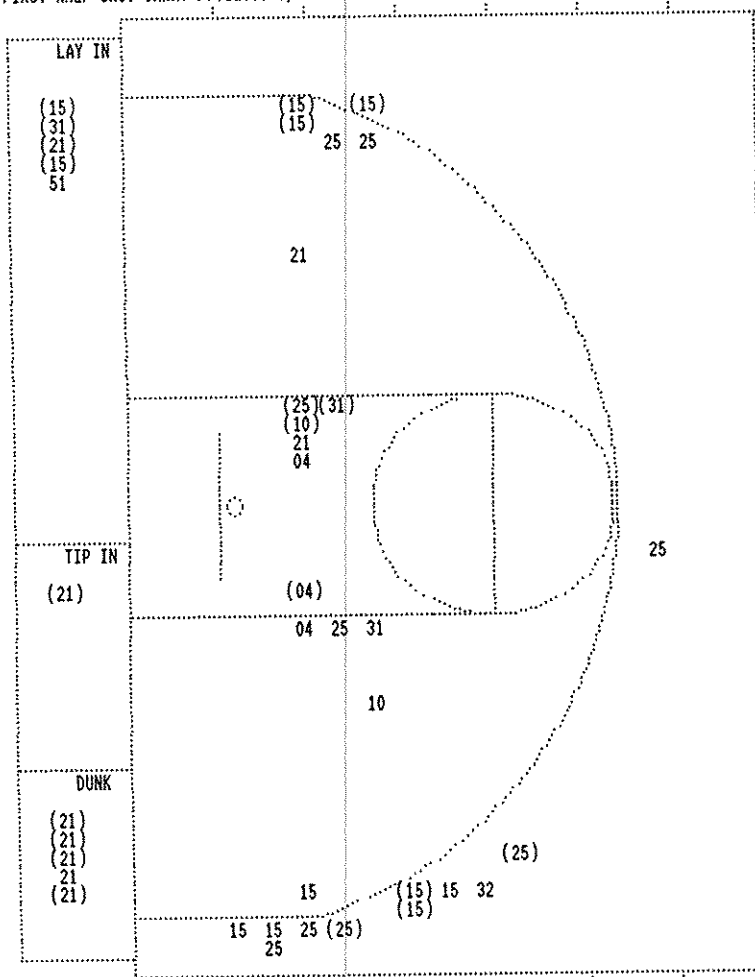
OFFICIALS: ERNIE LIGGETT, FRANKIE FRANCIS, ALT.-C.KIRK
 Technicals: None

SCORE BY PERIODS

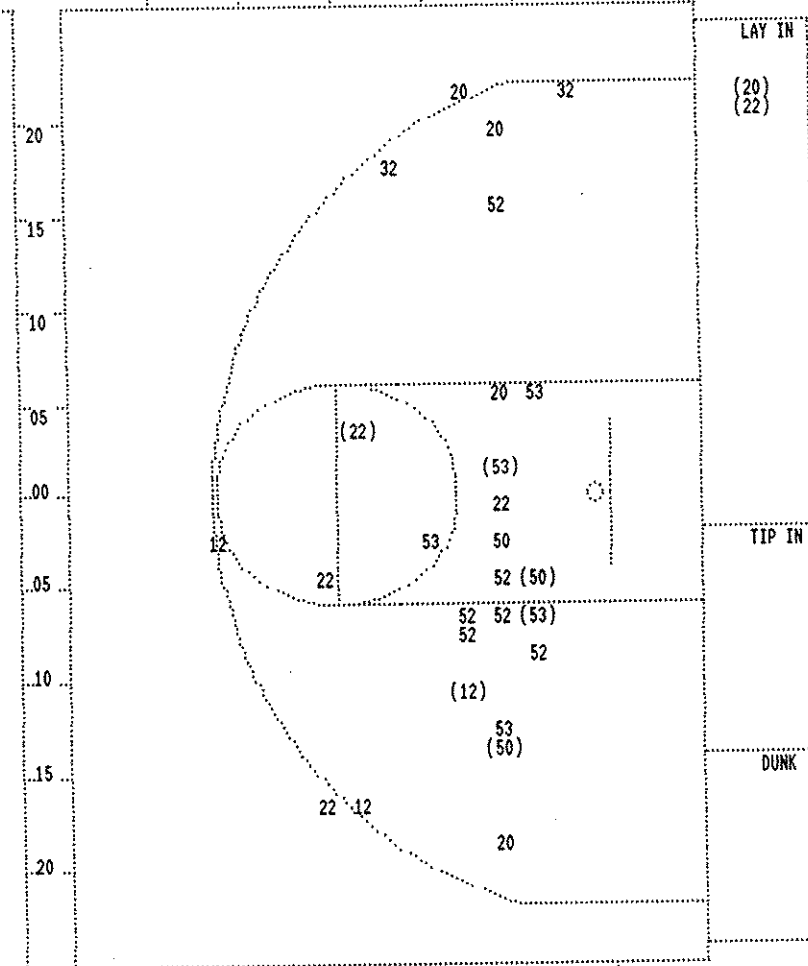
WARREN CENTRAL	13	6	=	19
MARION COUNTY	25	26	=	51

Attendance:

COMMENTS:	POINTS OFF TURNOVERS	SECOND CHANCE POINTS
WARREN CENTRAL	6	21
MARION COUNTY	21	8
Produced by the KHSAA Sweet Sixteen Stat Crew with	FINAL III - a Product of LEXICON SPORTS™	10



MARION COUNTY					
Player			Player		
04 - CRUME, ALE	1/3	33.3%	10 - BIGGERS, VI	1/2	50.0%
21 - SCOTT, ELI	6/9	66.6%	31 - ENGLISH, DE	2/3	66.6%
51 - O'DANIEL, S	0/1	0.0%	32 - FERRIELL, S	0/1	0.0%
15 - DOUGLAS, MI	7/11	63.6%			
25 - EPPS, ANTH	3/9	33.3%			



WARREN CENTRAL					
Player			Player		
20 - POYNTER, W	1/5	20.0%	12 - RILEY, JOD	1/3	33.3%
52 - HEIDBRINK, O	0/6	0.0%	50 - KIRBY, ANT	2/3	66.6%
53 - BUNDY, JER	2/5	40.0%			
22 - ROGERS, BR	2/5	40.0%			
32 - WHITLOCK, R	0/2	0.0%			

WARREN CENTRAL "DRAGONS" vs MARION COUNTY "KNIGHTS"
2nd Half Play by Play

Player	Team	MARION COUNTY
CRUME, ALEX	SCOTT, ELTON	O'DANIEL,STUART,DOUGLAS,MICHAEL,EPPS, ANTHONY
1-2	50.0% 21-40 52.5%	4 ft Lane Driving by O'DANIEL,STUART Assist by SCOTT, ELTON
2-3	66.6% 22-41 53.6%	6 ft Lane Jump shot by O'DANIEL,STUART Assist by EPPS, ANTHONY
8-12	66.6% 23-42 54.7%	Driving Layup by DOUGLAS,MICHAEL
3-3	100% 6-10 60.0%	EPPS, ANTHONY, 2 Free Throws made both
4-11	36.3% 24-45 53.3%	3 pt 23 ft Right Angle Jump shot by EPPS, ANTHONY Sub In: BIGGERS,VINCENT Out: CRUME, ALEX Sub In: ENGLISH,DERRICK Out: O'DANIEL,STUART
3-4	75.0% 25-47 53.1%	4 ft Lane Follow by ENGLISH,DERRICK Foul on DOUGLAS,MICHAEL Sub In: BELLE, JUTE Out: SCOTT, ELTON Sub In: FERRIELL,STEVEN Out: EPPS, ANTHONY Sub In: MATTINGLY,CRAIG Out: DOUGLAS,MICHAEL
2	2	Foul on BIGGERS,VINCENT
2	3	Foul on ENGLISH,DERRICK
1-2	50.0% 7-12 58.3%	MATTINGLY,CRAIG, 2 Free Throws made 1st missed 2nd
2-3	66.6% 8-13 61.5%	MATTINGLY,CRAIG, 1 Free Throw made
3	4	Foul on BIGGERS,VINCENT

Tip off at 7:30 p.m. on 03/19/93 at BOYS STATE TOURNEY GM 11
Produced by the KHSAA Sweet Sixteen Stat Crew with FINAL III - a Product of LEXIC

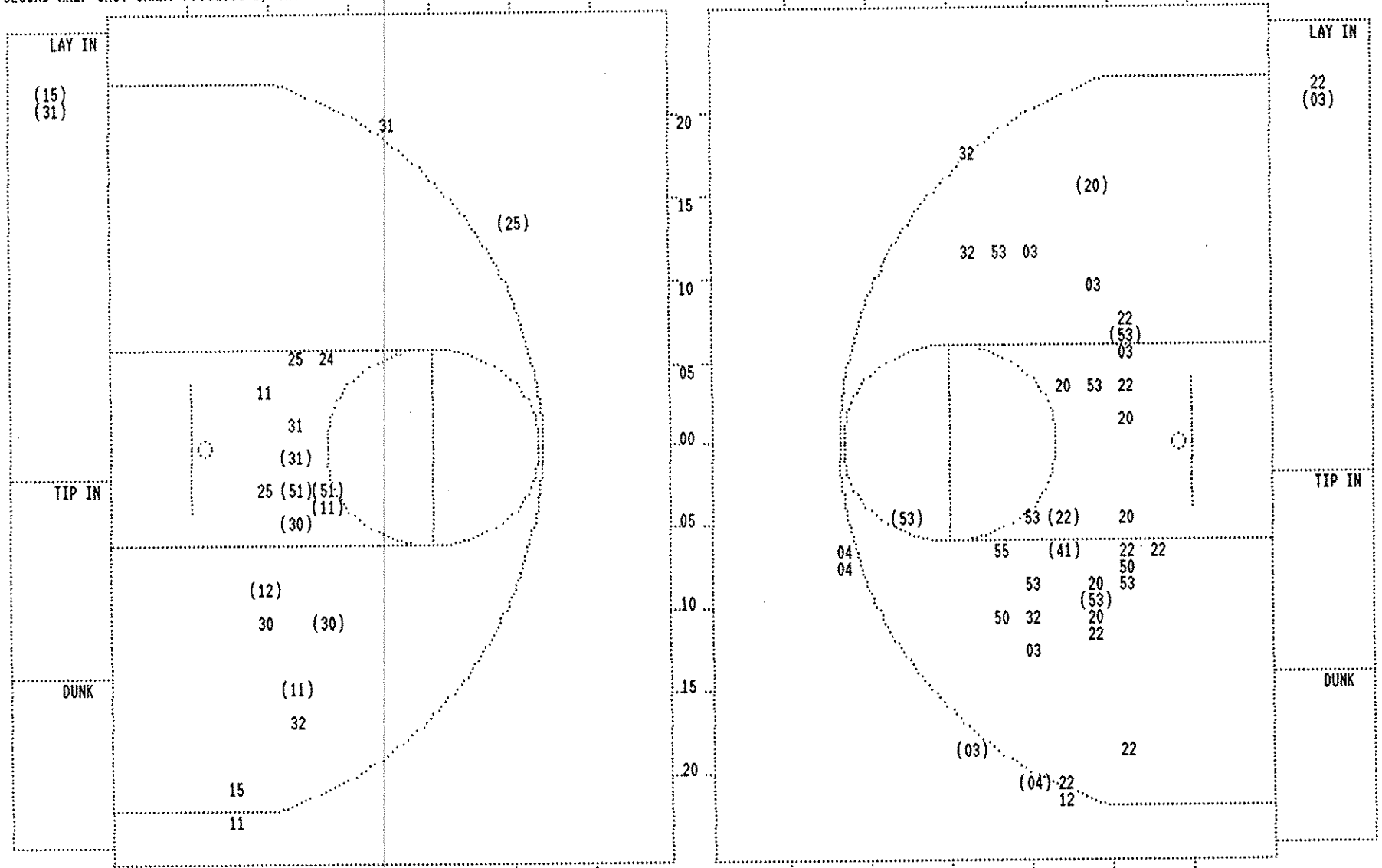
PAGE : 1

Time	Score	WARREN CENTRAL	Player	Team
		POYNTER, WAYNE ,HEIDBRINK,CHRIS,BUNDY, JERRY,ROGERS, BROCK,WHITLOCK,RONNIE		Ball to DRAGONS
3 7:33	*53-19			
3 7:00	*55-19			
3 6:43	*57-19			
3 5:37		Foul on HEIDBRINK,CHRIS	3	1
3 5:37	*59-19			
3 5:20	59-21*	16 ft Circle Jump shot by BUNDY, JERRY	3-6	50.0% 9-38 23.6%
3 4:33	59-23*	8 ft Left Side Turnaround by BUNDY, JERRY Assist by ROGERS, BROCK	4-7	57.1% 10-41 24.3%
3 3:51	*62-23		1	1
3 3:25		Foul on HEIDBRINK,CHRIS	4	2
3 3:25				
3 3:25		Sub In: KIRBY, ANTHONY Out: HEIDBRINK,CHRIS		
3 3:14	*64-23			
3 3:06				
3 2:51	64-25*	16 ft Left Side Jump shot by POYNTER, WAYNE Assist by ROGERS, BROCK	2-10	20.0% 11-43 25.5%
3 2:34			2	2
3 2:34				
3 2:34				
3 2:34	64-27*	9 ft Right Side Bank by BUNDY, JERRY Assist by WHITLOCK,RONNIE	5-8	62.5% 12-44 27.2%
3 1:41			1	3
3 1:29				
3 1:29		KIRBY, ANTHONY , 1 Free Throw missed	0-1	00.0% 3-5 60.0%
3 1:27		KIRBY, ANTHONY , 1 Free Throw missed	0-2	00.0% 3-6 50.0%
3 1:19		Foul on ROGERS, BROCK	4	3
3 1:19		Sub In: BOYD, TIM Out: ROGERS, BROCK		
3 1:19	*65-28			
3 1:19	*66-28			
3 1:07		Foul on BUNDY, JERRY	3	4
3 0:45				

WARREN CENTRAL "DRAGONS" vs MARION COUNTY "KNIGHTS"
2nd Half Play by Play

Player	Team	MARION COUNTY	Time	Score	WARREN CENTRAL	Player	Team
BIGGERS, VINCENT		CRAIG, BELLE, JUTE, ENGLISH, DERRICK, FERRIELL, STEVEN			POYNTER, WAYNE, BUNDY, JERRY, WHITLOCK, RONNIE, BOYD, TIM, KIRBY, ANTHONY		
		Ball to KNIGHTS	4	7:41			
4-7	1 57.1% 26-50	Foul on BELLE, JUTE	4	6:49	*68-28		
	2 18	Driving Layup by ENGLISH, DERRICK					
		Assist by FERRIELL, STEVEN					
		Sub In: BELL, QUINCY Out: ENGLISH, DERRICK	4	5:54			
		Sub In: OWEN, TOMMY Out: BIGGERS, VINCENT	4	5:54			
			4	5:54	Sub In: ROGERS, BROCK Out: POYNTER, WAYNE		
			4	5:54	Sub In: HEIDBRINK, CHRIS Out: WHITLOCK, RONNIE		
	1 6	Foul on BELL, QUINCY	4	4:43			
			4	4:43	KIRBY, ANTHONY, 2 Free Throws missed both	0-4	00.0% 3-8 37.5%
1-2	50.0% 27-53	6 ft Lane Jump shot by BELLE, JUTE	4	4:09	*70-28		
	50.9%		4	4:02	70-31*	3 pt 22 ft Right Side Jump shot by BOYD, TIM	1-3 33.3% 13-58 22.4%
1-2	50.0% 28-54	15 ft Left Side Jump shot by OWEN, TOMMY	4	3:46	*72-31		
	51.8%		4	3:32	72-33*	7 ft Lane Jump shot by ROGERS, BROCK	3-14 21.4% 14-59 23.7%
			4	3:25		Foul on ROGERS, BROCK	5 5
			4	3:25		Sub In: RILEY, JODY Out: ROGERS, BROCK	
			4	3:25		Sub In: RIDER, ANDREW Out: BUNDY, JERRY	
			4	3:20		Sub In: BARBER, TRAVIS Out: BOYD, TIM	
			4	3:00	72-36*	3 pt 22 ft Right Side Jump shot by BARBER, TRAVIS	1-1 100% 15-60 25.0%
						Assist by RILEY, JODY	1 4
2-3	66.6% 29-56	12 ft Left Side Jump shot by BELLE, JUTE	4	2:45	*74-36		
	1 7	Foul on FERRIELL, STEVEN	4	2:28			
		Sub In: WOOD, RUSTY Out: BELL, QUINCY	4	2:28			
		Sub In: OWENS, ANTHONY Out: OWEN, TOMMY	4	2:28			
		Sub In: COX, BRAD Out: BELLE, JUTE	4	2:28			
1-1	100% 30-57	8 ft Left Side Jump shot by OWENS, ANTHONY	4	2:28	74-37*	BARBER, TRAVIS, 2 Free Throws missed 1st made 2nd	1-2 50.0% 4-10 40.0%
	1 8	Foul on OWENS, ANTHONY	4	2:16	*76-37		
			4	2:00			
			4	2:00		Sub In: SARVER, TORRENCE Out: HEIDBRINK, CHRIS	
			4	2:00	76-39*	KIRBY, ANTHONY, 2 Free Throws made both	2-6 33.3% 6-12 50.0%
			4	2:00		Sub In: GABHART, CHRIS Out: KIRBY, ANTHONY	
			4	1:57		Foul on GABHART, CHRIS	1 6
	1 9	Foul on WOOD, RUSTY	4	1:46			
			4	1:46	76-40*	RILEY, JODY, 1 & Bonus made 1st missed 2nd	1-2 50.0% 7-14 50.0%
			4	1:44	76-42*	8 ft Lane Turnaround by GABHART, CHRIS	1-1 100% 16-63 25.3%
			4	1:31			
		Foul on MATTINGLY, CRAIG	4	1:31			
		Sub In: OWEN, TOMMY Out: FERRIELL, STEVEN	4	1:31			
		Sub In: BELLE, JUTE Out: MATTINGLY, CRAIG	4	1:31			
2-3	66.6% 31-59	6 ft Lane Driving by OWEN, TOMMY	4	1:31	76-43*	GABHART, CHRIS, 2 Free Throws missed 1st made 2nd	1-2 50.0% 8-16 50.0%
	52.5%		4	1:24	*78-43		
1-2	50.0% 9-15	OWEN, TOMMY, 2 Free Throws missed 1st made 2nd	4	0:38		Foul on BARBER, TRAVIS	1 7
	60.0%		4	0:38	*79-43		
			4	0:19	79-45*	Driving Layup by BARBER, TRAVIS	2-6 33.3% 17-68 25.0%
			4	0:19			
	2 11	Foul on WOOD, RUSTY	4	0:19	79-46*	BARBER, TRAVIS, 1 Free Throw made	2-3 66.6% 9-17 52.9%
			4	0:05		Foul on SARVER, TORRENCE	1 8
0-1	00.0% 9-16	BELLE, JUTE, 1 & Bonus missed 1st	4	0:05			
2-4	50.0% 31-60	3 pt 22 ft Left Base Line Jump shot by OWEN, TOMMY, missed	4	0:00			
	51.6%		4	0:00		Rebound by SARVER, TORRENCE	D-1 Tot-1 D-1 Tot-40

SECOND HALF SHOT CHART Produced by the KHSAA Sweet Sixteen Stat Crew with FINAL III - a Product of LEXICON SPORTS™



MARION COUNTY						
Player				Player		
51 - O'DANIEL, S	2 / 2	100.0%	24 - MATTINGLY, J	0 / 1	0.0%	
15 - DOUGLAS, MI	1 / 2	50.0%	30 - BELLE, JUI	2 / 3	66.6%	
25 - EPPS, ANTH	1 / 3	33.3%	31 - ENGLISH, DE	2 / 4	50.0%	
11 - OWEN, TOMM	2 / 4	50.0%	32 - FERRIELL, S	0 / 1	0.0%	
12 - OWENS, ANT	1 / 1	100.0%				
Layups	1-9 Ft	10-15 Ft	Over 15 Ft	3 Pointers	Total	
2 / 2	6 / 11	2 / 3	0 / 1	1 / 4	11 / 21	
100.0%	54.5%	66.7%	0.0%	25.0%	52.4%	

WARREN CENTRAL						
Player			Player			Player
20 - POYNTER, W	1 / 6	16.6%	04 - BOYD, TIM	1 / 3	33.3%	
53 - BUNDY, JER	3 / 8	37.5%	12 - RILEY, JOD	0 / 1	0.0%	
22 - ROGERS, BR	1 / 9	11.1%	41 - GABHART, C	1 / 1	100.0%	
32 - WHITLOCK, R	0 / 3	0.0%	50 - KIRBY, ANT	0 / 2	0.0%	
03 - BARBER, TR	2 / 6	33.3%	55 - RIDER, AND	0 / 1	0.0%	
Layups	1-9 Ft	10-15 Ft	Over 15 Ft	3 Pointers	Total	
1 / 2	4 / 17	0 / 9	2 / 4	2 / 8	9 / 40	
50.0%	23.5%	0.0%	50.0%	25.0%	22.5%	